



Tulip Filet Kerchief

Designed by Julie A. Bolduc

It seems a lot of designers are into designing kerchiefs these days! Well here is one that I came up with. Even though it is done in filet, I have decided to write out the instructions as well as provide a graph to follow. That way beginners in filet crochet can get a better sense of how to follow a chart by actually seeing it written out.

Materials Needed

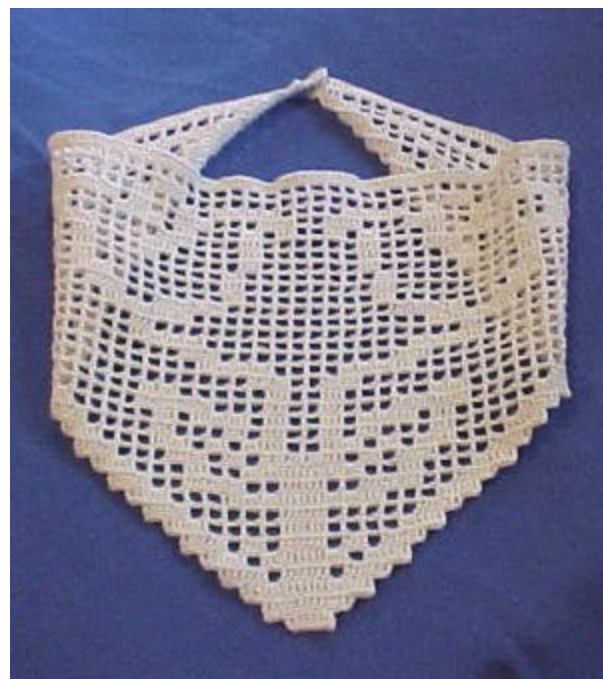
Size 10 Crochet Cotton, any color. Aunt Lydia's in ecru was used in the example
 Size 7 Steel crochet hook
 Tapestry Needle
 Sewing Needle
 Sewing thread to match crochet thread
 Size 9mm silvertone snap.

Yarn Thickness: 10thread

Gauge: 10sc=1"

Finished Size: 23" x

Skill Level: Beginner to intermediate in filet



Basic Filet information. The chart provided is actually upside down in the way the stitches are worked. When you print it out, turn it over and start at the wide end and work your way to the narrow point.

Filet is usually done by following a stitch chart or a graph. If you look on the graph, you will see black spaces. These will be referred to as 'blocks'. The open spaces will be referred to as 'spaces'. The first 2 rows explain how to make blocks and spaces. After that, you will be instructed how many blocks and spaces you will need to make as you go.

Instructions

ROW 1: Ch213. Dc in 4th ch from hook and in each ch across. You should now have 210 dc and a ch3 at the end that will count as a dc. For a total of 211 dc. Ch3, turn.

ROW 2: Sk first dc. Dc in each of the next 6dc. Ch2. *Sk next 2 dc. Dc in next dc. Ch2. Rep from * 65 times. Sk next 2 dc, dc in each of the next 6dc and in the top of ch3. Ch1, turn.

ROW 3: Sk first dc. Slst in each of the next 3dc. Ch3. Dc in each of the next 3dc.

Dc in each of the next 2 chs. Dc in next dc. (Ch2. Sk next 2 chs. Dc in next dc. (space made)) Work 1 more space. [Dc in each of the next 2 chs. Dc in next dc. (block made)] Work 8 more blocks. 11 spaces. 2 blocks. 16 spaces 2 blocks. 11 spaces. 9 blocks. 2 spaces. Dc in each of the next 6 dc. Ch1, turn. This row should be now 1 block shorter on each end. You will be decreasing the size of each row at the ends by 1 block on each end.

ROW 4: Sk first dc. Slst in each of the next 3dc. Ch3. Dc in each of the next 3dc. Dc in each of the next 2 chs. Dc in next dc. Work 2 spaces. 1 block. 17 spaces. 1 block. 2 spaces. 1 block. 1 space. 4 blocks. 4 spaces. 4 blocks. 1 space. 1 block. 2 spaces. 1 block. 17 spaces. 1 block. 2 spaces. Dc in each of the next 6 sts. Ch1, turn.

ROW 5: Sk first dc. Slst in each of the next 3dc. Ch3. Dc in each of the next 3dc. Dc in each of the next 2 chs. Dc in next dc. 2 spaces. Work 1 block. 11 spaces. 4 blocks. 1 space. 2 blocks. 1 block. 2 spaces. 2 blocks. 3 spaces. 2 blocks. 2 spaces 2 blocks. 3 spaces. 2 blocks. 2 spaces. 1 block. 1 space. 4 blocks. 11 spaces. 1 block. 2 spaces. Dc in each of the next 6 dc. Ch1, turn.

ROW 6: Sk first dc. Slst in each of the next 3dc. Ch3. Dc in each of the next 3dc. Dc in each of the next 2 chs. Dc in next dc. Work 2 spaces. 1 block. 8 spaces. 3 blocks. 3 spaces. 3 blocks. 1 space. 1 block. 3 spaces. 1 block. 1 space. 1 block. 2 spaces. 1 block. 1 space. 1 block. 3 spaces. 1 block. 1 space. 3 blocks. 3 spaces. 3 blocks. 8 spaces. 1 block. 2 spaces. Dc in each of the next 6 sts. Ch1, turn.

ROW 7: Sk first dc. Slst in each of the next 3dc. Ch3. Dc in each of the next 3dc. Dc in each of the next 2 chs. Dc in next dc. Work 2 spaces. 1 block. 6 spaces. 2 blocks. 1 space. 1 block. 6 spaces. 2 blocks. 3 spaces. 1 block. 6 spaces. 1 block 3 spaces. 2 blocks. 6 spaces. 1 block. 1 spaces. 2 blocks. 6 spaces. 1 block. 2 spaces. Dc in each of the next 6 sts. Ch1, turn.

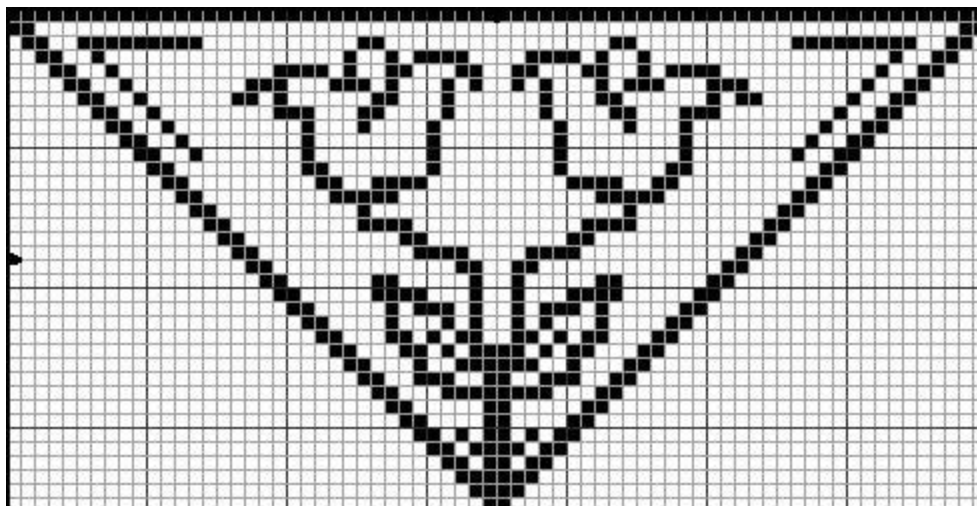
ROW 8: Sk first dc. Slst in each of the next 3dc. Ch3. Dc in each of the next 3dc. Dc in each of the next 2 chs. Dc in next dc. Work 2 spaces. 1 block. 8 spaces. 3 blocks. 3 spaces. 2 blocks. 4 spaces. 1 block. 6 spaces. 1 block 4 spaces. 2 blocks. 3 spaces. 3 blocks. 8 spaces. 1 block. 2 spaces. Dc in each of the next 6 sts. Ch1, turn.

ROW 33: Sk first dc. Slst in each of the next 3dc. Ch3. Dc in each of the next 3dc. Dc in each of the next 2 chs. Dc in next dc. Work 1 space 2 blocks. 1 space. Dc in each of the next 6 sts. Ch1, turn.

ROW 34: Sk first dc. Slst in each of the next 3 dc. Ch3. Dc in each of the next 18 sts. Ch1, turn.

ROW 36: Sk first dc. Slst in each of the next 3 dc. Ch3. Dc in each of the next 6 sts. Ch1, fasten off.

ROW 35: Sk first dc. Slst in each of the next 3 dc. Ch3. Dc in each of the next 12 sts. Ch1, turn.



Design written on Saturday, July 15, 2000. Copyright ©2000 By Julie A. Bolduc p124011
From the Crochet Pattern Collection of the JPF Crochet Club <http://www.jpfun.com/>
For Personal Use Only, not for resale. Copyright 2006 by Julie A. Bolduc